



## Technical Service Bulletin

Number TSB-TM1-1

Date: 7/27/25

Purpose: ☐ Critical firmware update ☒ Hardware error ☐ Mfg. error ☐ Safety ☒ Design improvement  
☐ other:

total number of attached pages: 2

☒ images included

Nature of bulletin:

To eliminate the possibility of the output driver oscillating. This issue may or may not occur, but it is recommended to perform the service to eliminate any potential effects. This oscillation can cause overheating of the output driver MOSFETS in affected products, which can damage the parts, including burned components and failures causing the main power fuse to blow. Once damaged, the MOSFETS would need to be replaced. This bulletin eliminates this potential issue.

Product(s) affected:

TM1, up to s/n 25062002, TM LITE(all models) up to s/n 2507726, TM DUO up to s/n 2410041, TM DA, up to s/n 2507006.

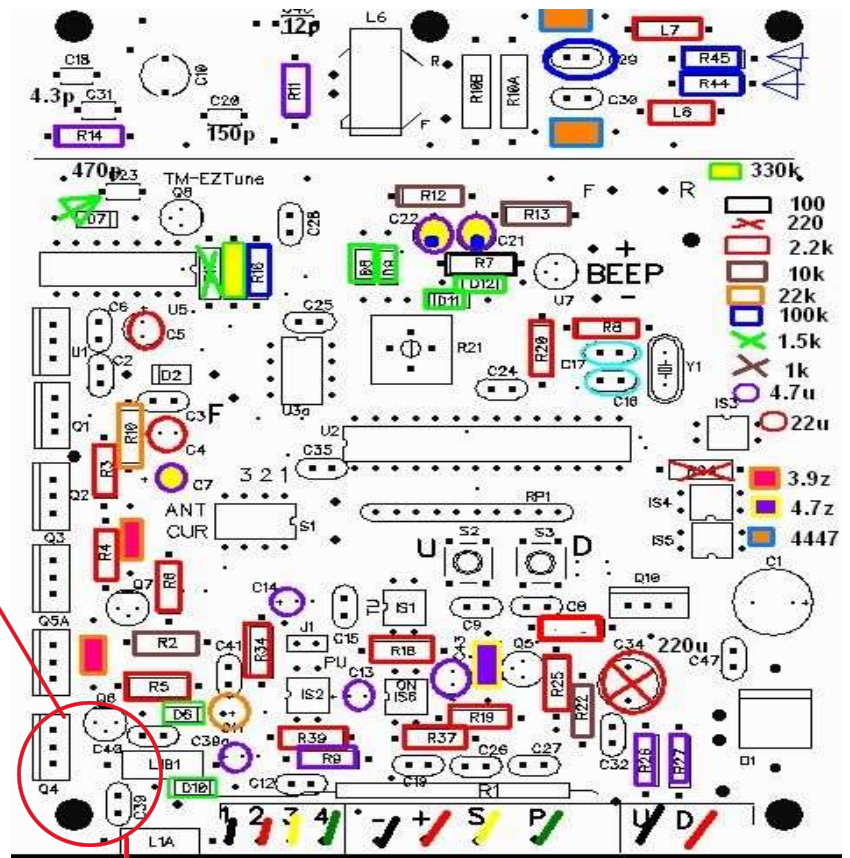
Corrective action:

Removal of ceramic output capacitors on both output leads eliminates the oscillation. These can be either unsoldered, or force-removed with a small pliers (being careful not to leave excess wire tails remaining on board). After removing the parts, clear any remaining debris.

Attached photos detail each product as to location. No further action is required after this

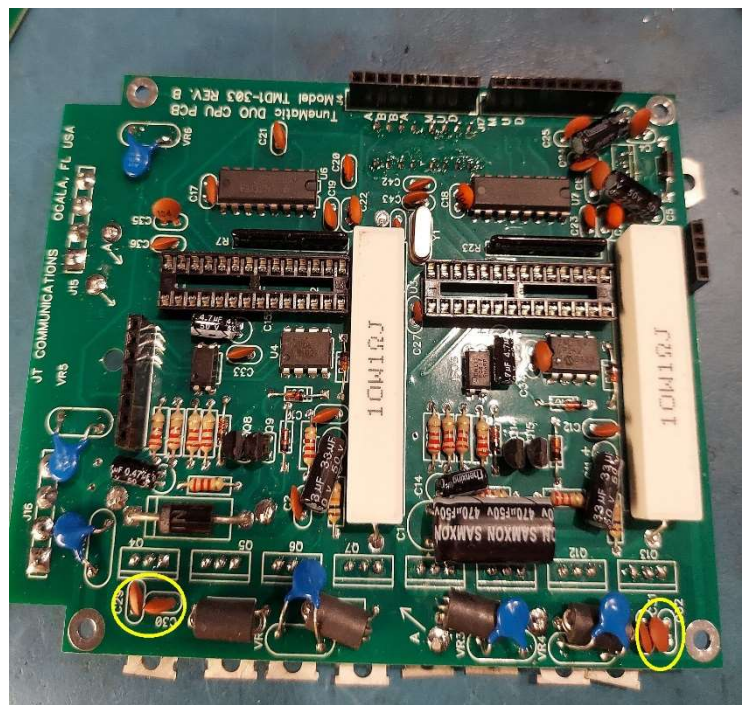
TM1/TM EZTune:

- 1) Remove rear panel by removing four(4) #6-32 flathead screws from rear of unit.
- 2) Locate C39 & C40(located near the output chokes); and remove with cutters or pliers, completely removing all debris, and making sure no leads remain.
- 3) Re-attach rear panel.



### TMDUO/DA: Steps:

- 1) Remove any knobs on front panel.
- 2) Remove four(4) #6-32 flathead screws from rear corners of unit.
- 3) Slide main cover off rear panel.
- 4) Remove four(4) 4-40x3/4" screws, spacers, and lockwashers, and set aside.
- 5) Carefully unplug display board from main PCB. On TMDA, flip board downward as wires will be attached from underneath.
- 6) Locate capacitors in yellow circle and remove them with small cutters/pliers, completely removing all debris, and making sure no leads remain.
- 7) Re-assemble unit using steps 5-1 above.



TMLITE(all models):

- 1) Remove knob from front panel
- 2) Remove rear screws from back panel
- 3) Locate four(4) 4-40 x 11/16" screws on PCB, and loosen so that entire assembly can be removed from enclosure.
- 4) Remove capacitors circled in yellow, and remove them with small cutters/pliers, completely removing all debris, and making sure no leads remain.
- 5) Re-install assembly into enclosure, and re-install rear cover and front panel knob.

